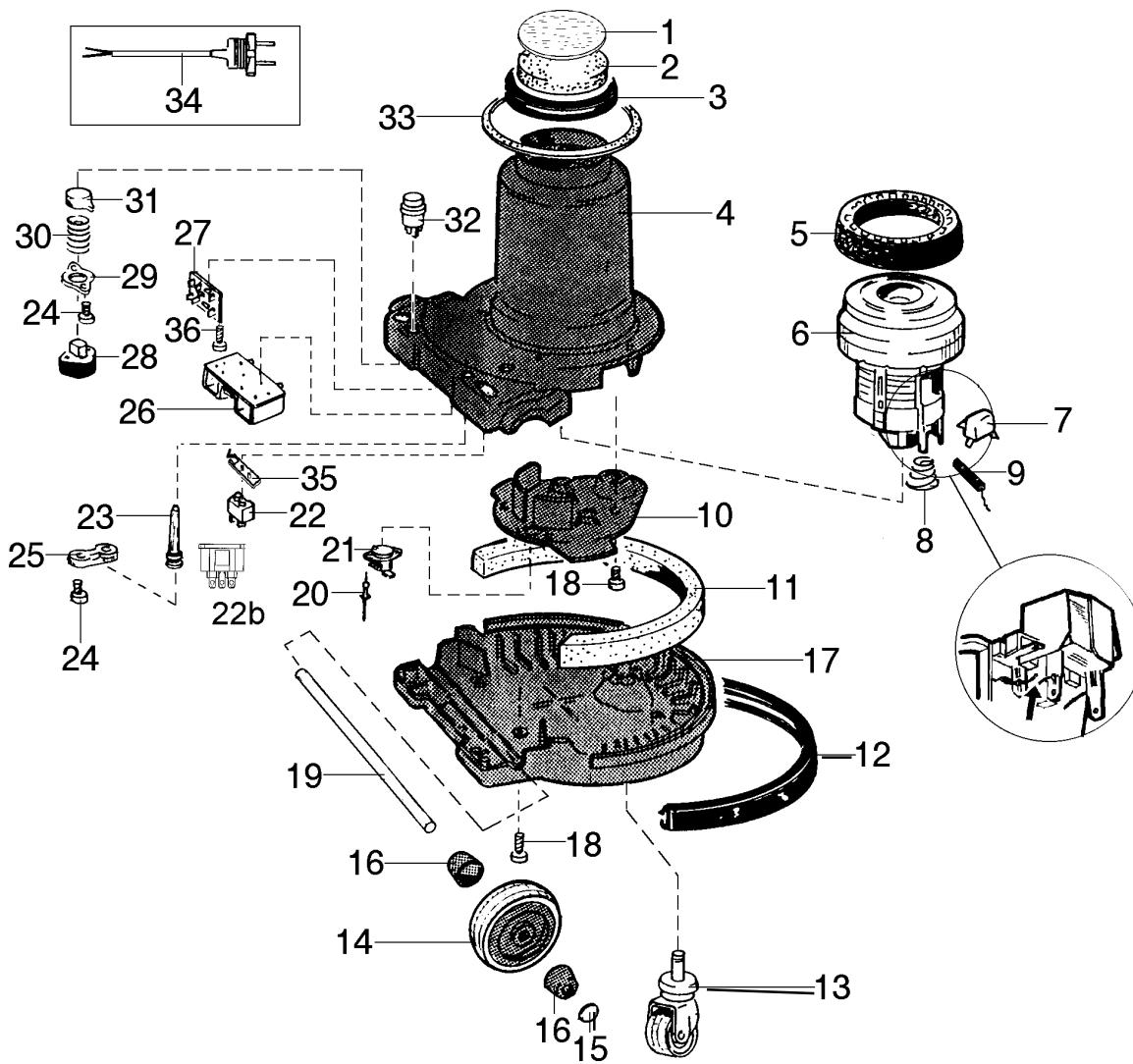
**DESCRIPTION****PLAN**

Lower parts, line-drawings	B - 0.3.1 - 2
Lower parts, part number	B - 0.3.1 - 3
Line drawing	B - 0.3.1 - 4
Table with fan units, sleeves and cords	B - 0.3.1 - 5
Upper parts, line-drawings	B - 0.3.1 - 6
Upper parts, part number	B - 0.3.1 - 7
Nozzles, line drawings	B - 0.3.1 - 8
Nozzles, part number	B - 0.3.1 - 9
Nozzles, line drawings	B - 0.3.1 - 10
Nozzles, part number	B - 0.3.1 - 11
Hose, line drawing	B - 0.3.1 - 12
Hose, part number	B - 0.3.1 - 13
Tubes, line drawing	B - 0.3.1 - 14
Tubes, part number	B - 0.3.1 - 15

Call 800-353-9991 Vacshopusa.com

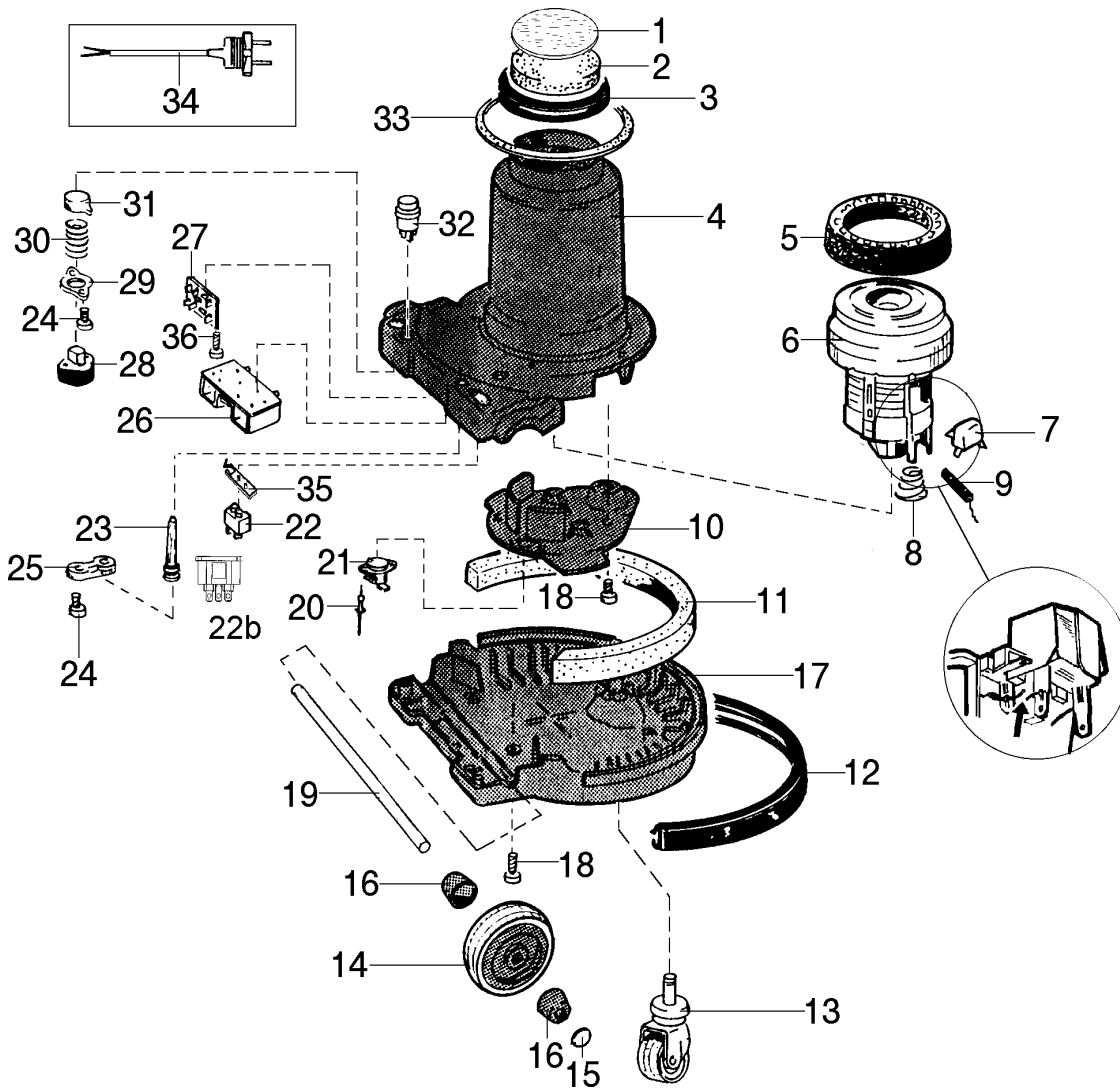


Call 800-353-9991 Vacshopusa.com

00-09**SPARE PARTS****BOOK B****00-12****UZ 930S/S2 LOWER PARTS****B****0.3.1****3**

Item	No.	Qty.	Part no.	Description
1		1	140 3261 000	Paper filter
2		1	140 1535 000	Filter
3		1	140 2847 000	Gasket
4		1	140 7010 000	Stand UZ930S
		1	140 7010 010	Stand UZ930S2
		1	140 7010 020	Stand UL-listed,UZ930s
		1	140 7010 030	Stand UL-listed,UZ930
		1	140 7010 070	Stand UL-listed,UZ930s2
		1	140 7010 080	Stand, UZ 930S, UL-list. for new powet outlet
		1	140 7010 090	Stand, UZ 930S2, UL-list. for new powet outlet
5		1	140 7901 000	Suspension ring,
5		1	140 7901 000	Suspension ring, for the 140 7902 xxx fan units.
		1	011 1548 000	Suspension ring, for the old type of motor
6		1		Fan unit (see table)
7		1	140 8166 010	Capacitor
8		4	140 7016 000	Spring
9		2	001 8619 110	Carbon brush with out holder
		2	140 7719 000	Carbon brush f.140 7902 xxx fan units. w. holder 230-240V
		2	140 7720 000	Carbon brush f.140 7902 xxx fan units. w. holder 110-120V
		2	140 7721 000	Carbon brush f.140 7902 xxx fan units. w. holder 100V
10		1	140 7012 000	Motor plate
		1	140 7012 010	Motor plate UL-listed
11		1	140 7022 000	Silencer
12		1	140 7018 000	Bumper
13		1	140 7025 000	Castor wheel
14		2	140 5055 010	Wheel
15		2	140 5058 000	Locking cap
16		4	140 5057 000	Protective washer
17		1	140 7011 000	Bottom part
		1	140 7011 010	Bottom part UL-list.UZ930S/S2
		1	140 7011 020	Bottom part UL-list.UZ 930
18		14	140 9214-070	Screw PTK 50*14
19		1	140 5059 000	Shaft
20		2	140 5694 000	Rivet
21		1	140 3894 000	Thermo switch
22		1	010 9678 000	Extra outlet
22b		1	140 7665 000	Power outlet, For US new from serial nr 984600001
23		1		Sleeve (see table)
24		4	140 9214 040	Screw PTK 40*14
25		1	056 1014 060	Anti strain clip
26		1	140 7026 000	Circuit board S2 220-240V
		1	140 7026 010	Circuit board S2 100-120V
27		1	140 7024 000	Anti static board
28		1	140 7033 000	Switch
29		1	140 1508 000	Washer
30		1	140 1522 000	Spring
31		1	140 1516 020	Push button, red
		1	140 7805 010	Push button, silver
32		1	140 7023 000	Switch S2
33		1	140 7021 000	Gasket
34				Cord set see table, page 5
35		1	011 7365 000	Protection plate
36		1	140 7027 000	Screw

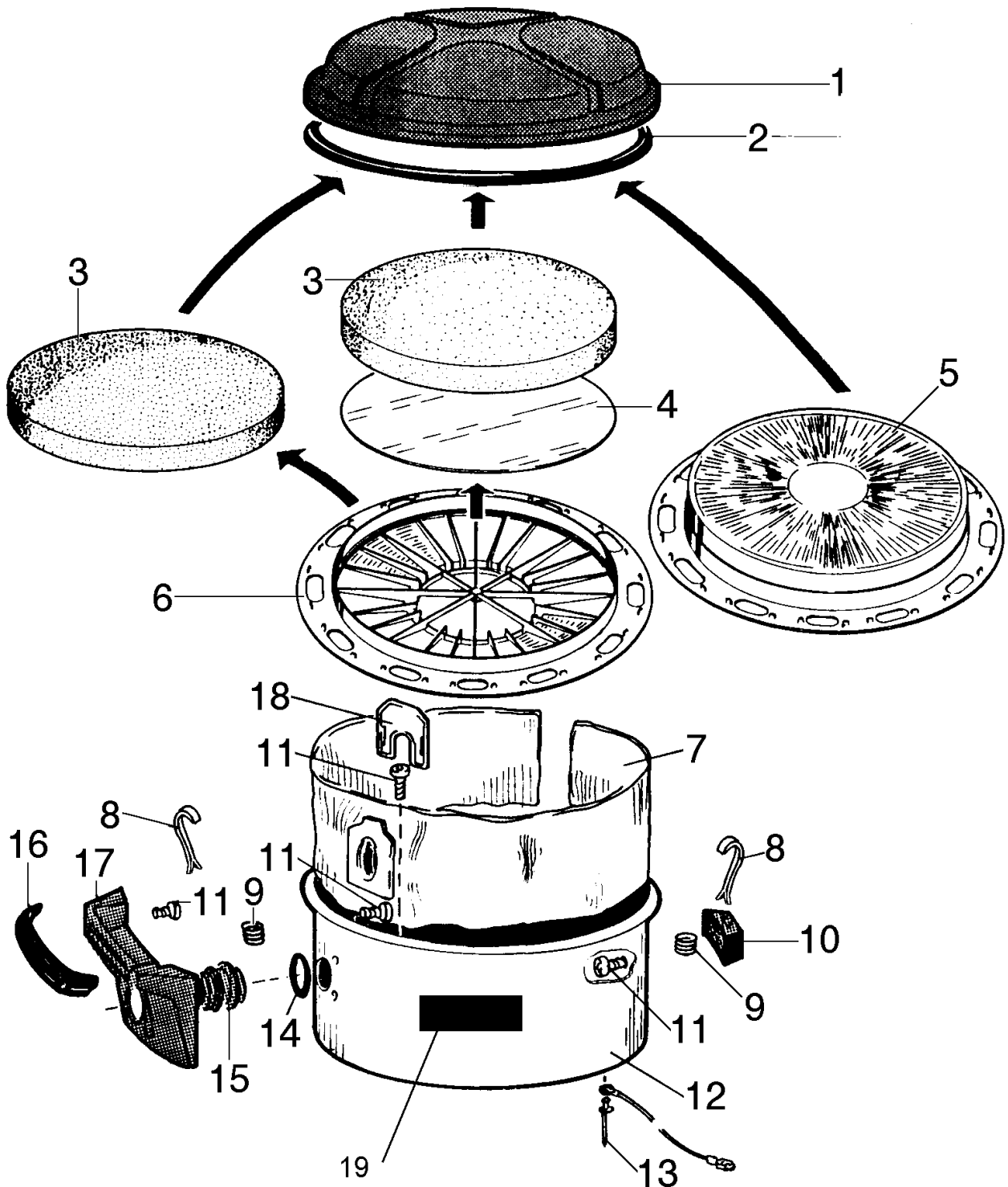
Call 800-353-9991 Vacshopusa.com



Call 800-353-9991 Vacshopusa.com

Prod.no	Voltage	Fan unit pos.6	Sleeve pos.23	Cord pos.34
904 0250	230V	>> 140 7902 500	140 7035 000	140 6423 230
904 0251	230V	>> 140 7902 500	140 7035 000	140 6423 230
904 0252	230V	>> 140 7902 500	140 7035 000	140 6423 120
904 0253	240V	>> 140 7902 520	093 1027 010	140 6423 060
904 0254	240V	>> 140 7902 520	093 1027 010	140 6423 060
905 0255	240V	>> 140 7902 520	093 1027 010	140 7039 000
904 0256	110/120V	>>140 7902 510	093 1027 010	140 6423 100
904 0257	100V	>> 140 7902 530	093 1027 010	140 6423 050
904 0258	230V	>> 140 7902 500	140 7035 000	140 6423 230
904 0260	230V	>> 140 7902 500	140 7035 000	140 6423 230
904 0263	220V	>> 140 7902 500	140 7035 000	140 7043 000
904 0265	240V	>> 140 7902 520	093 1027 010	140 7039 000
904 0266	127V	>> 140 7902 540	093 1027 010	140 6423 010
904 0267	220-230V	>> 140 7902 500	093 1027 010	140 6423 110
904 0268	110/120V	>> 140 7902 510	140 7035 000	140 6423 120
904 0269	120V	>> 140 7902 510	140 7035 000	140 6423 120
904 0270	230V	>> 140 7902 500	140 7035 000	140 6423 230
904 0271	240V	>> 140 7902 520	093 1027 010	140 6423 060
904 0272	240V	>> 140 7902 520	093 1027 010	140 7039 000
904 0276	100V	>> 140 7902 530	093 1027 010	140 6423 050
904 0277	100V	>> 140 7902 530	093 1027 010	140 6423 050
904 0278	230V	>> 140 7902 500	140 7035 000	140 6423 120
904 0279	120V	>> 140 7902 510	093 1027 010	140 3859 060
904 0290	120V	>> 140 7902 510	093 1027 010	140 3859 020
904 0291	120V	>> 140 7902 510	093 1027 010	140 3859 020
904 0292	120V	>> 140 7902 510	093 1027 010	140 3859 020

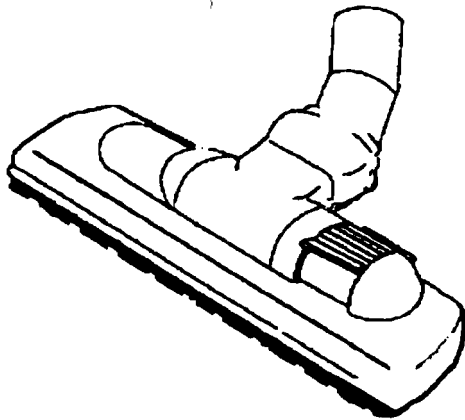
Call 800-353-9991 Vacshopusa.com



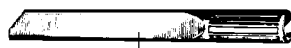
Item	Qty.	Part No	Description
1	1	140 7802 040	Cover, black
	1	140 5062 010	Cover, UL-listed
2	1	140 0061 030	Gasket
3	1	140 1515 010	Filter
4	1	140 3260 000	Paper filter
	1	140 5661 000	Hygiene filter
5	1	140 2666 010	Micro filter
6	1	140 2911 000	Filter holder
7		140 7015 040	Dust bag (10 pcs)
	1	140 7019 000	Cloth dust bag
8	2	140 1507 000	Spring
9	2	140 1519 000	Spring
10	1	140 7009 000	Support, black
	1	140 7009 020	Support, UL-listed
11	8	140 9214 070	Screw PTK 50*14
12	1	140 7020 010	Container (chrome)
	1	140 7020 020	Container (paint.inside)
13	1	140 5694 000	Rivet
14	1	740 4416 000	O-ring
15	1	140 7013 000	Inlet
16	1	140 5060 000	Handle protection
17	1	140 2915 020	Handle
18	1	140 7014 000	Dust bag lock
19	2	140 7766 000	Decal, Euroclean UZ 930
	2	140 7767 000	Decal, Nilfisk UZ 930
	2	140 7777 000	Decal, KENT UZ 930

Call 800-353-9991
Vacshopusa.com

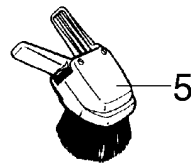
>> Means: New or changed ref. number or/and changed/new specifications



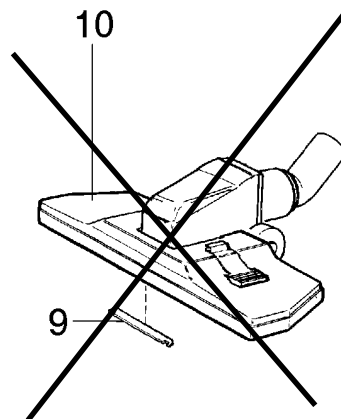
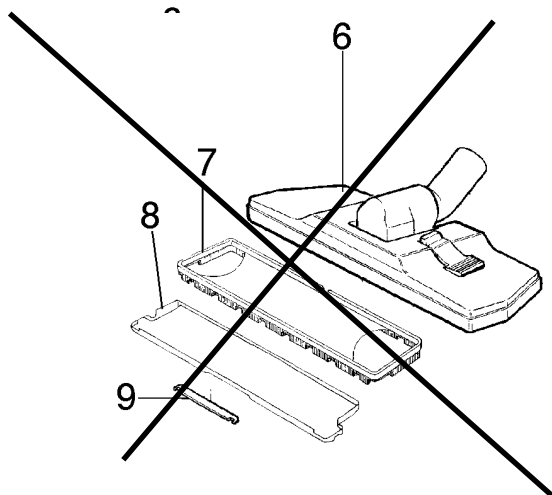
Call 800-353-9991
Vacshopusa.com



4



5



00-09

SPARE PARTS

BOOK B

00-12

UZ 930S/S2 NOZZLES

B

0.3.1

9

<u>Item</u>	<u>Qty</u>	<u>Part No</u>	<u>Description</u>
-------------	------------	----------------	--------------------

1		140 7087 000	Combi nozzle
2	1	P 145 9921 000	Elbow
3	1	P 145 9922 000	Roll
4	1	P 145 9923 000	Shaft
5	1	P 145 9924 000	Suction channel
6	1	P 145 9925 000	Pedal
7	1	P 145 9926 000	Square moulding
8	1	P 145 9927 000	Cover
9	1	P 145 9928 000	Base plate
10	1	P 145 9929 000	Brush strip
11	2	P 093 1811 000	Spring
12	1	P 145 9930 000	Bottom plate
13	2	P 093 1813 000	Little picker

Screw/Skruv LKS KA 35x27

Screw/Skruv LSKS KA 35x16

NOTE

P Means: SPARE PARTS FOR NOZZLE

140 7087 000 Depleted when no longer on stock

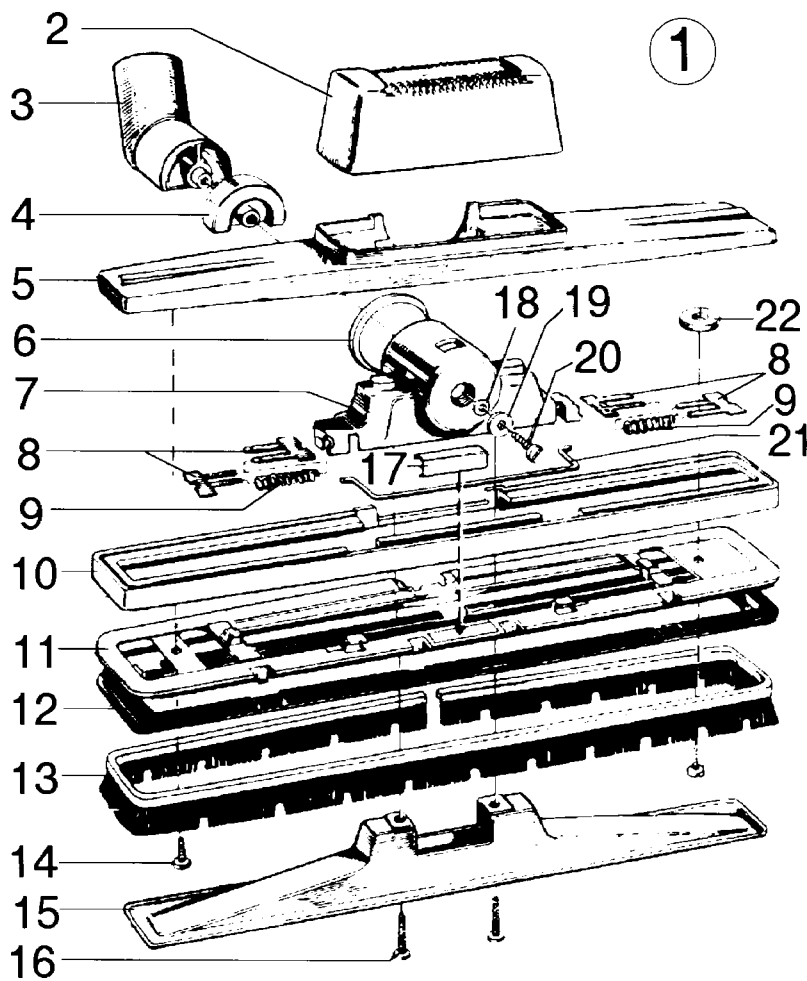
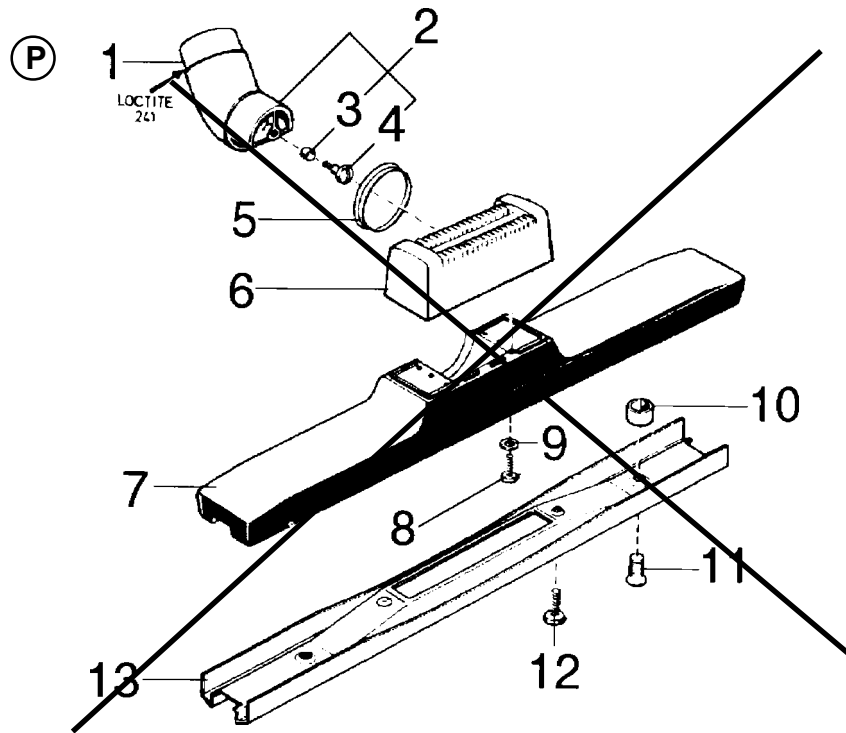
<u>Item</u>	<u>Part No</u>	<u>Description</u>
-------------	----------------	--------------------

4	010 3098 250	Crevice nozzle
5	011 3104 230	Small comb. nozzle
(P) 6	011 8090 010	Comb. nozzle. Depleted
(P) 7	011 5053 000	Brush strip
(P) 8	011 5362 000	Bottom plate
(P) 9	011 5457 000	Plush plate
(P) 10	011 5062 060	Comb. nozzle w. wheels. Depleted

Call 800-353-9991 Vacshopusa.com

NOTE

P Means: Depleted when no longer on stock

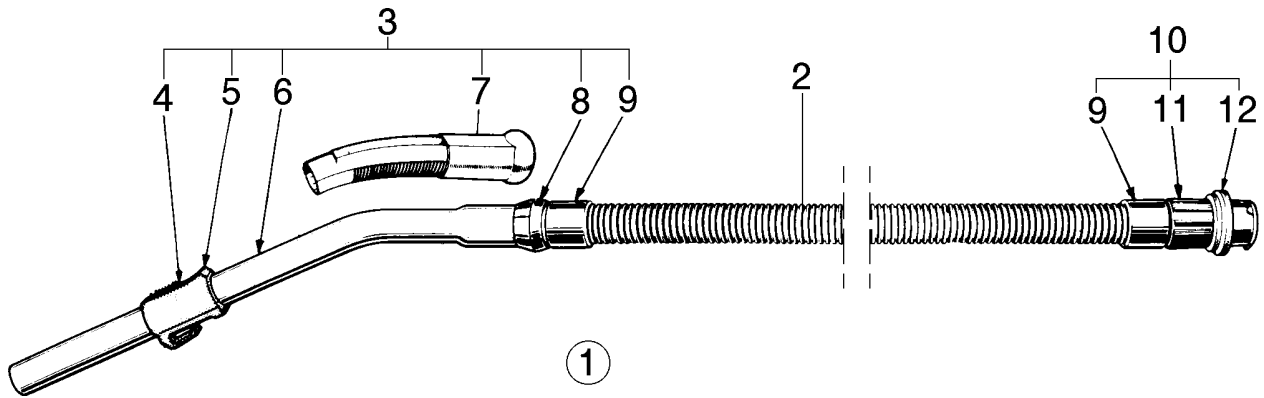


Item	Qty.	Part No	Description
(P)		140 2188-030	Carpet nozzle cpl. Depleted
1	1	140 4380 000	Sleeve
2	1	010 8039 000	Connection tube cpl.
3	1	010 8012 000	Bushing
4	1	010 8013 000	Screw
5	1	010 8011 000	Bearing ring
6	1	010 8015 010	Thread comb
7	1	140 2187 000	Upper part
8	4	729 5283 010	Screw B6*16
9	4	734 1136 010	Washer dia 4.3
10	2	140 0473 000	Spacer
11	2	724 3327 010	Screw M5*12
12	2	729 5344 010	Screw B8*16
13	1	140 1579 000	Bottom plate

NOTE

P Means: Depleted when no longer on stock, spare parts for this nozzle depleted when no longer on stock.

Item	Qty.	Part No	Description
1		011 2332-020	Comb. nozzle, cpl.
2	1	010 6596 010	Thread comb, grey
3	1	010 3144 000	Connection tube
4	1	010 6575 000	Front bearing bush
5	1	010 6586 040	Cover, brown
6	1	010 6581 010	Bearing bush
7	1	010 9861 000	Keeper
8	4	010 6568 000	Retainer
9	2	010 6567 000	Spring
10	1	010 9860 010	Protection bar
11	1	010 9867 000	Brush holder
12	1	010 9868 000	Gasket
13	1	010 6562 000	Bristle insert
14	2	729 5281 010	Screw, RXS B6*12, Z.PI.
15	1	011 2333 000	Nozzle
16	2	729 5285 010	Screw, RXS B6*19, Z.PI.
17	1	010 9859 000	Mounting plate
18	1	735 1136 010	Washer, Ø4.3, Z.PI.
19	1	734 1136 010	Washer, Ø4.3, Z.PI.
20	1	724 1287 010	Screw, MRX M4*8, Z.PI.
21	1	010 6565 000	Loop schackle
22	1	014 9536 000	Washer

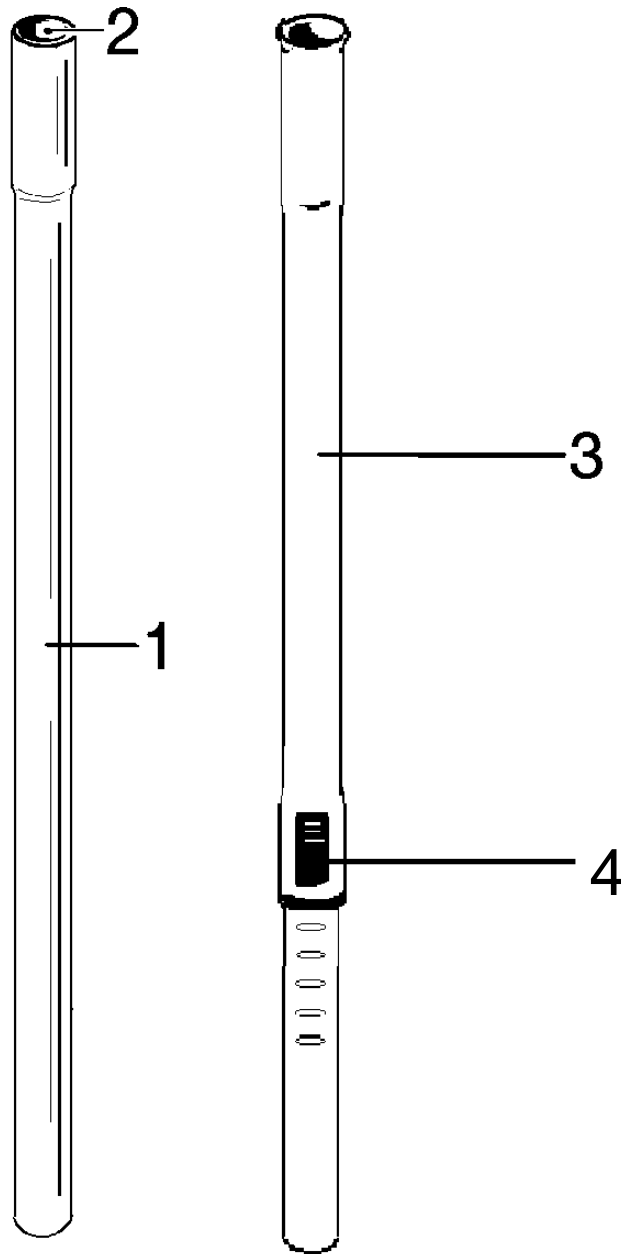


Call 800-353-9991 Vacshopusa.com

00-09**SPARE PARTS****BOOK B****00-12****UZ 930S/S2 HOSE WITH PARTS****B****0.3.1****13**

<u>Item</u>	<u>Qty.</u>	<u>Part No</u>	<u>Description</u>
1	1	140 2782 060	Hose cpl.
2	1	140 2781 020	Hose, by the metre
3	1	140 5116 000	Bent end piece cpl.
4	1	010 9613 080	Suction control
5	1	010 9614 080	Retainer
6	1	011 6432 510	Bent end piece
7	1	011 1811 070	Handle
8	1	011 1655 020	Protection ring
9	2	140 6630 000	Sleeve
10	1	140 3846 000	Cuff cpl.
11	1	011 1659 030	Outer sleeve
12	1	010 9299 040	Cuff

Call 800-353-9991
Vacshopusa.com



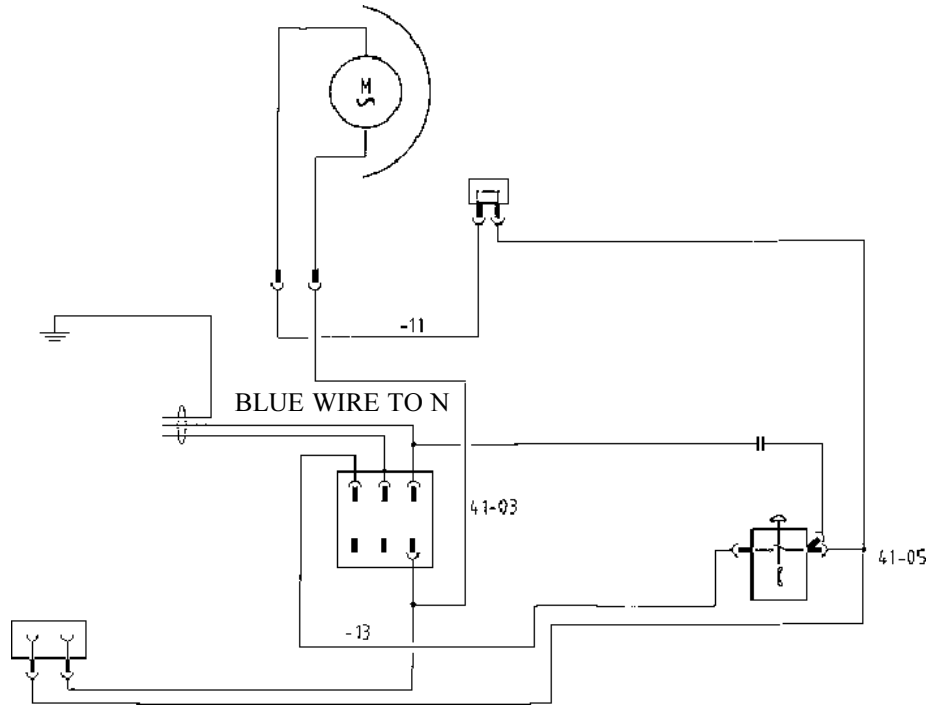
Call 800-353-9991 Vacshopusa.com

00-09**SPARE PARTS****BOOK B****00-12****UZ 930S/S2 HOSE WITH PARTS****B****0.3.1****15**

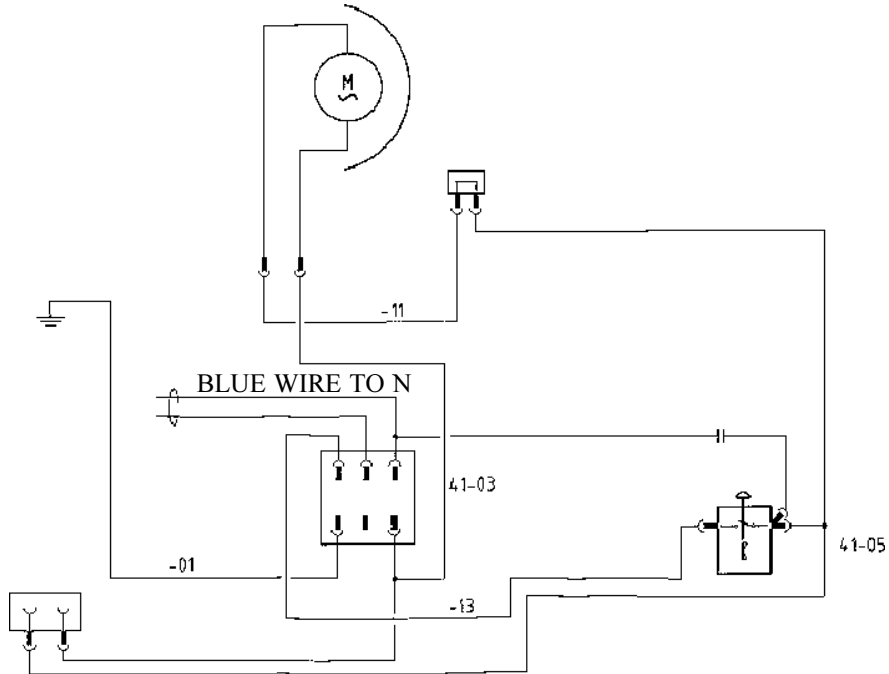
<u>Item</u>	<u>Part No</u>	<u>Description</u>
1	011 6431 040	Extension tube, 500 mm
	011 6431 030	Extension tube, 200 mm
	011 6431 010	Extension tube, 750 mm
	011 6431 020	Extension tube, 410 mm
2	011 3199 010	Insert
3	011 8130 040	Extension tube, telescopic
4	011 8136 020	Regulator

Call 800-353-9991 Vacshopusa.com

FOR THE NEW DOMEL
FAN UNITS

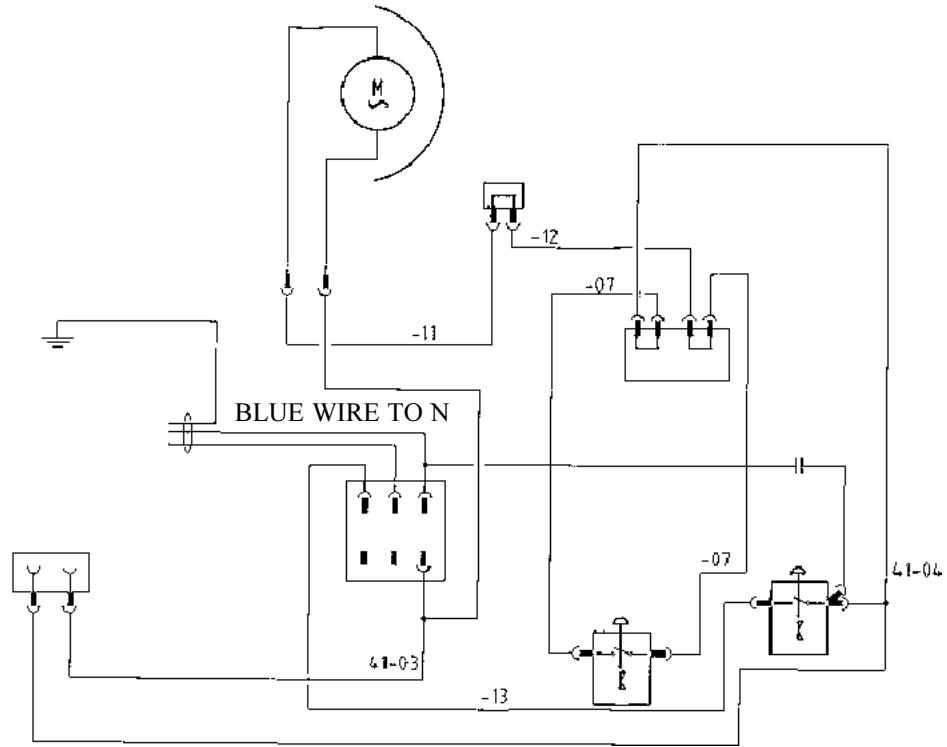


FOR THE NEW DOMEL
FAN UNITS

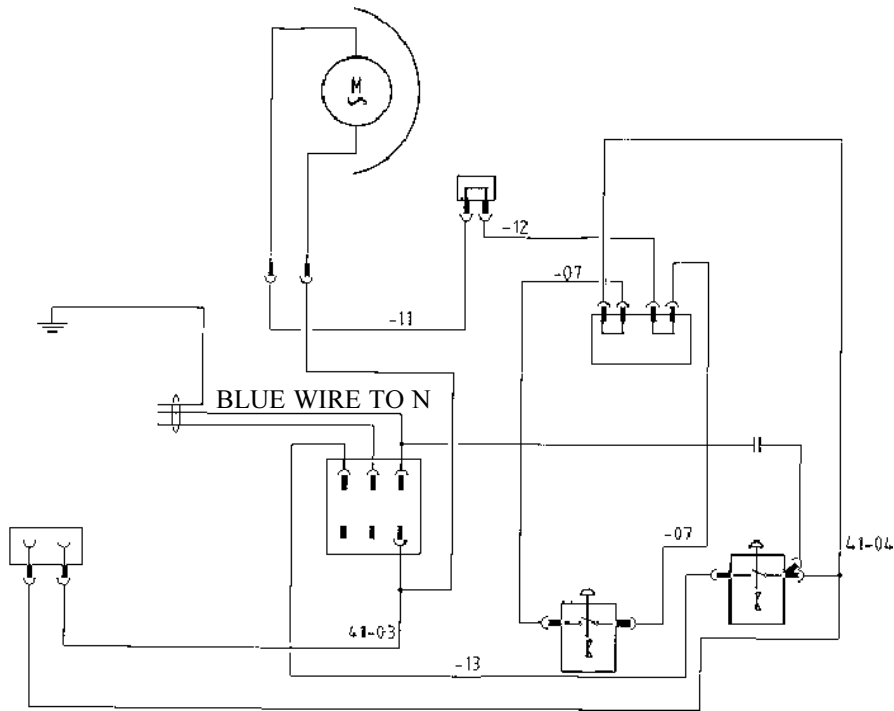


**Call
800-353-9991
Vacshopusa.c
om**

FOR THE NEW DOMEL
FAN UNITS

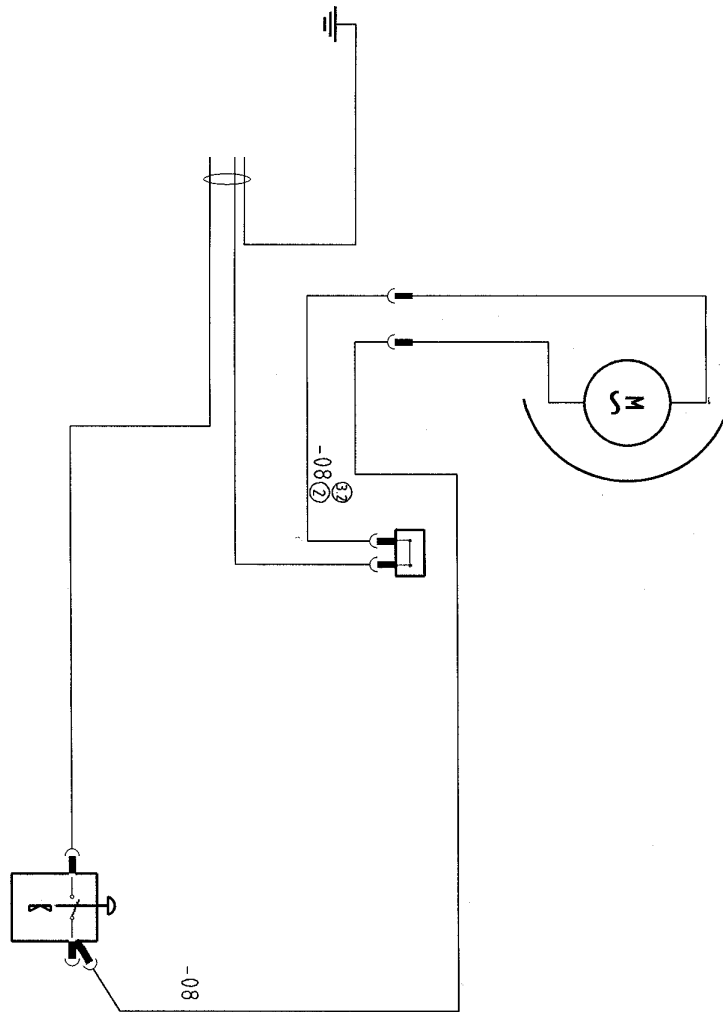


FOR THE NEW DOMEL
FAN UNITS



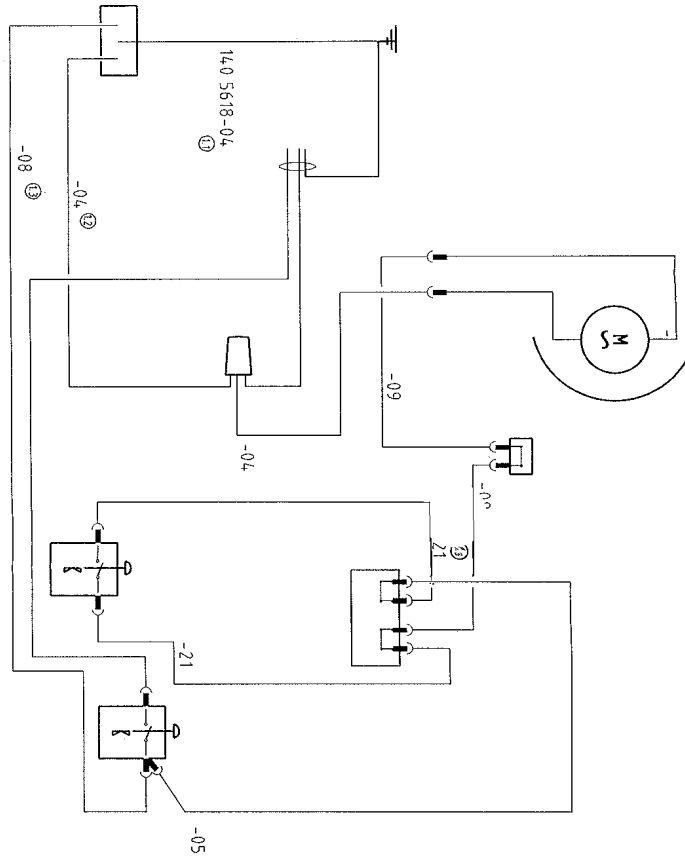
Call
800-353-9991
Vacshopusa.c
om

FOR THE NEW DOMEL
FAN UNITS



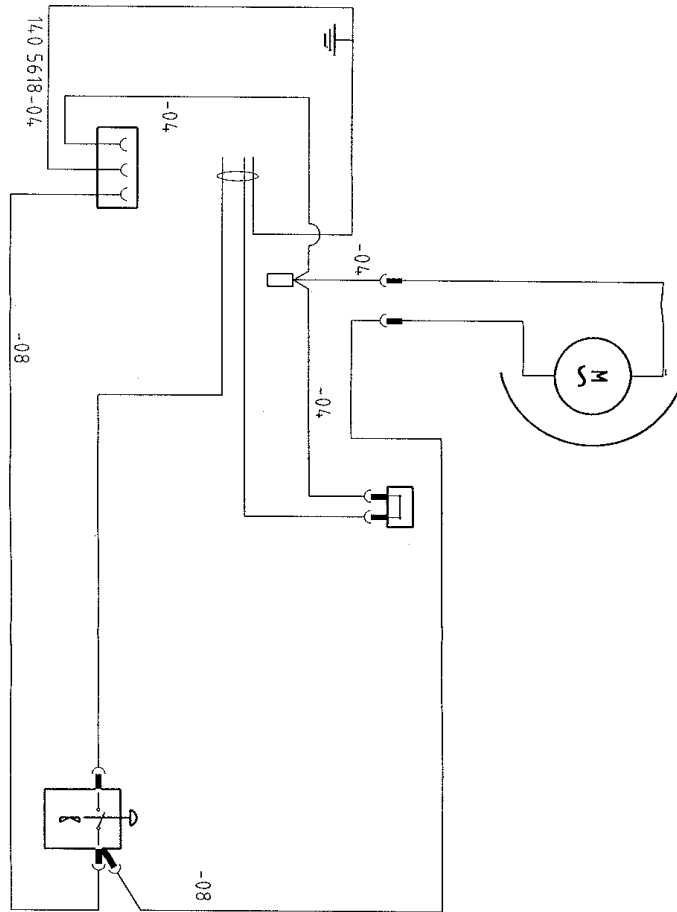
Call 800-353-9991 Vacshopusa.com

FOR THE NEW DOMEL
FAN UNITS



□

FOR THE NEW DOMEL
FAN UNITS



Call 800-353-9991 Vacshopusa.com