

EWD 315, EWD 320**1**

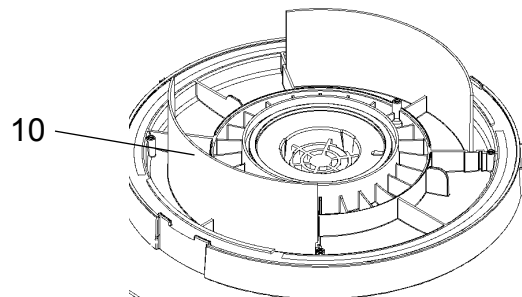
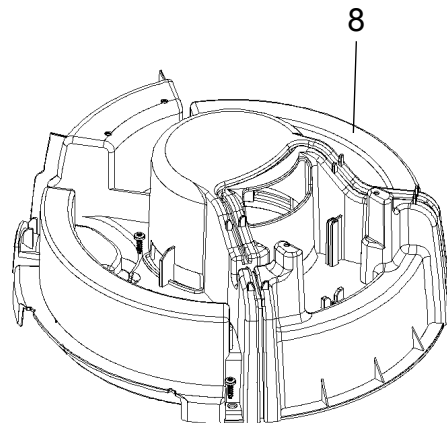
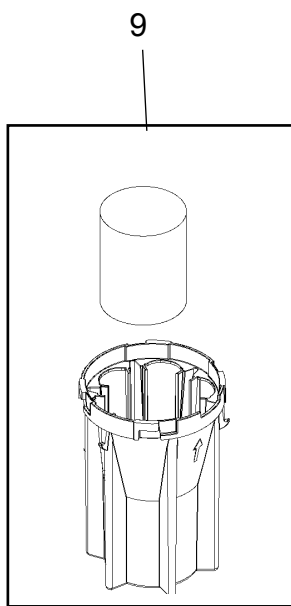
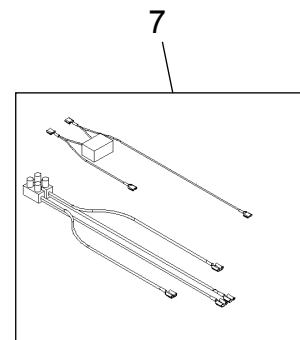
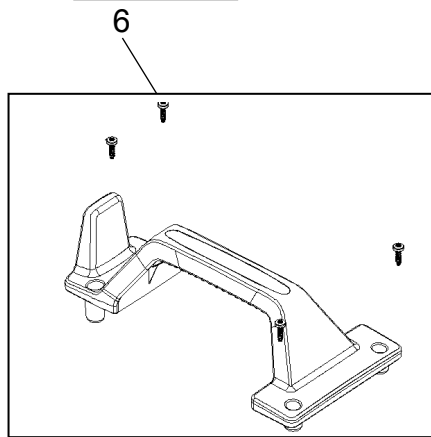
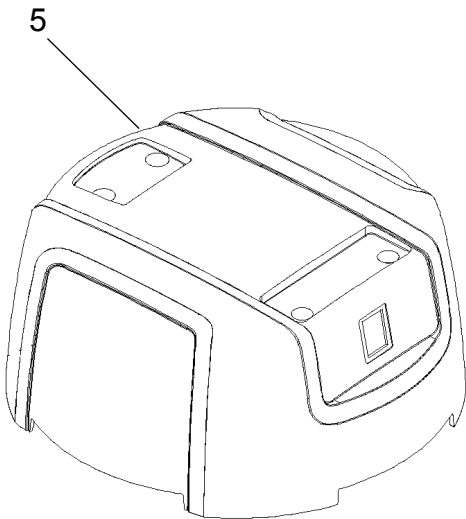
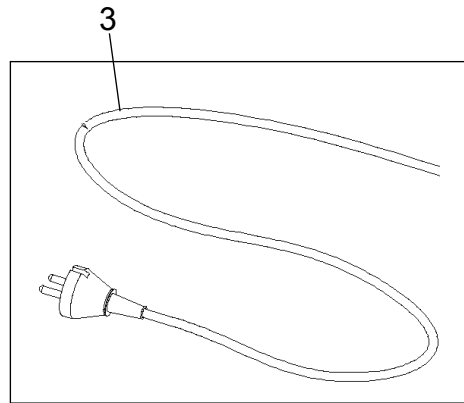
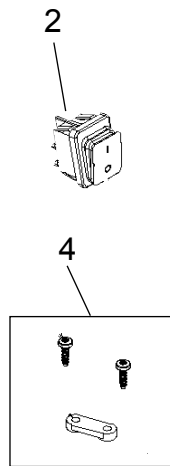
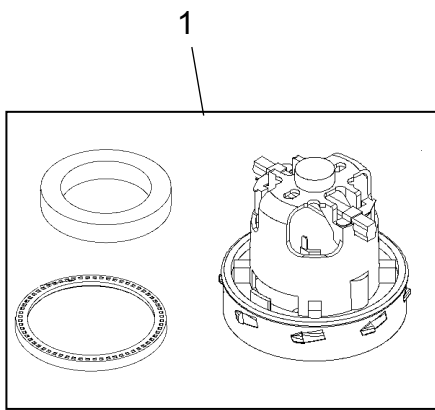
DESCRIPTION	PAGE
Motor top, EWD 315, EWD 320,	2
Containers, EWD 315, EWD 320	4
Wheels	6
Nozzles, tubes and hoses	8
Filter and dustbags	10
Wiring diagram	12

WHEN ORDERING PARTS

- * Use the digit numbers from the "Part. No." columns in this parts list.
- * Specify the serial number of the machine.
- * Use the space below to record the model and serial number for future reference.

Model _____ Serial no. _____

Model _____ Serial no. _____

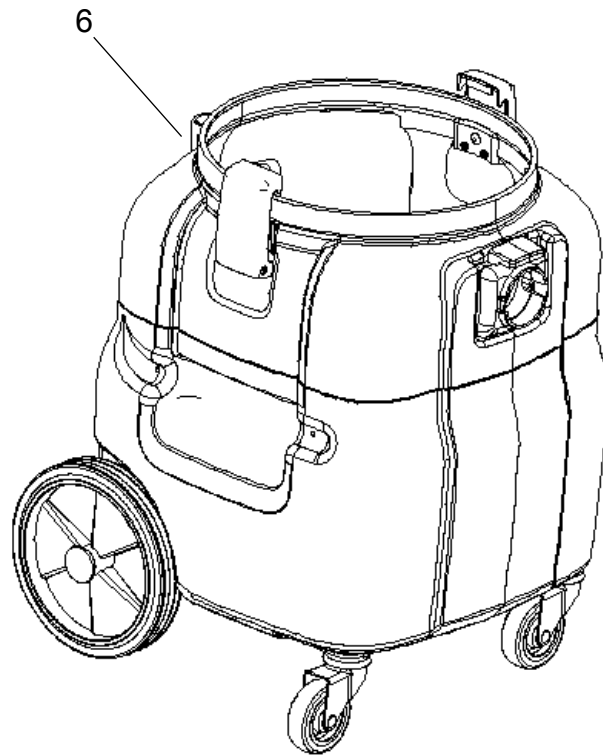
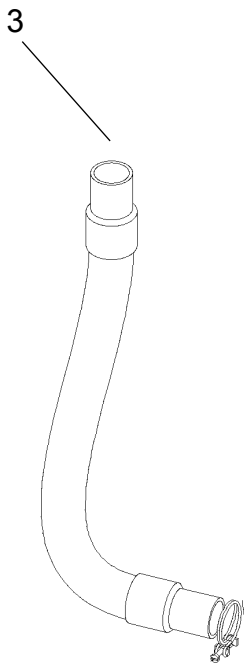
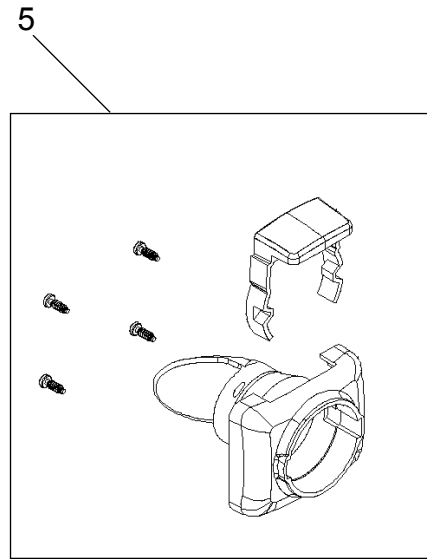
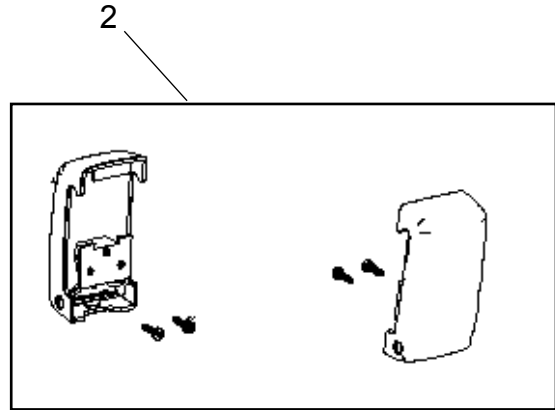
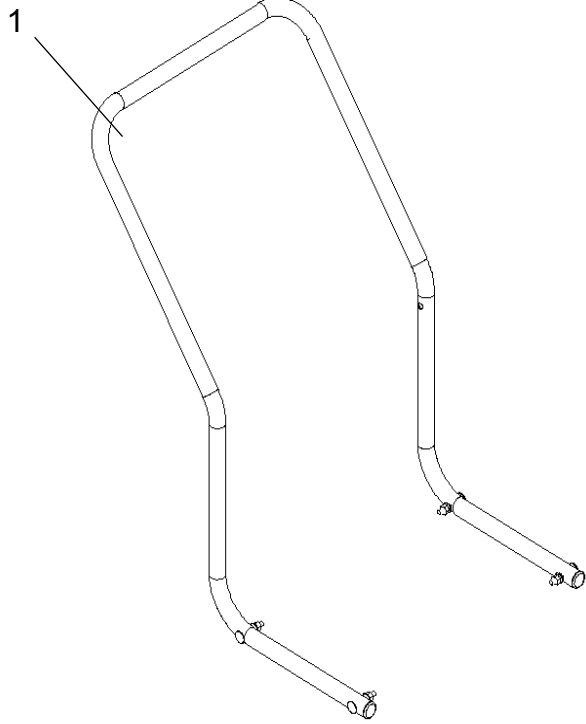


04-11**MOTOR TOP****823 0078 030****EWD 315, EWD 320****3**

Item.No.	Part No.	Qty.	Description	Note
1	140 8689 510	1	Fan unit By-pass 100-120V	Gaskets included
2	140 9537 500	2	Switch two pole	
3	147 0716 500	1	Cord set grounded 50 feet (15,5 meters)	
4	140 6560 500	1	Anti strain clip	Screws included
5	140 8668 520	1	Cover outer, UL-approved	Screws included
6	140 8651 510	1	Handle	Screws included
7	140 7620 510	1	Internal wires, UL-approved	
8	140 8653 510	1	Cover fan unit, UL-approved	
9	140 8680 500	1	Float basket	
10	140 8664 520	1	Chassis, UL-approved	

4

EWD 315, EWD 320

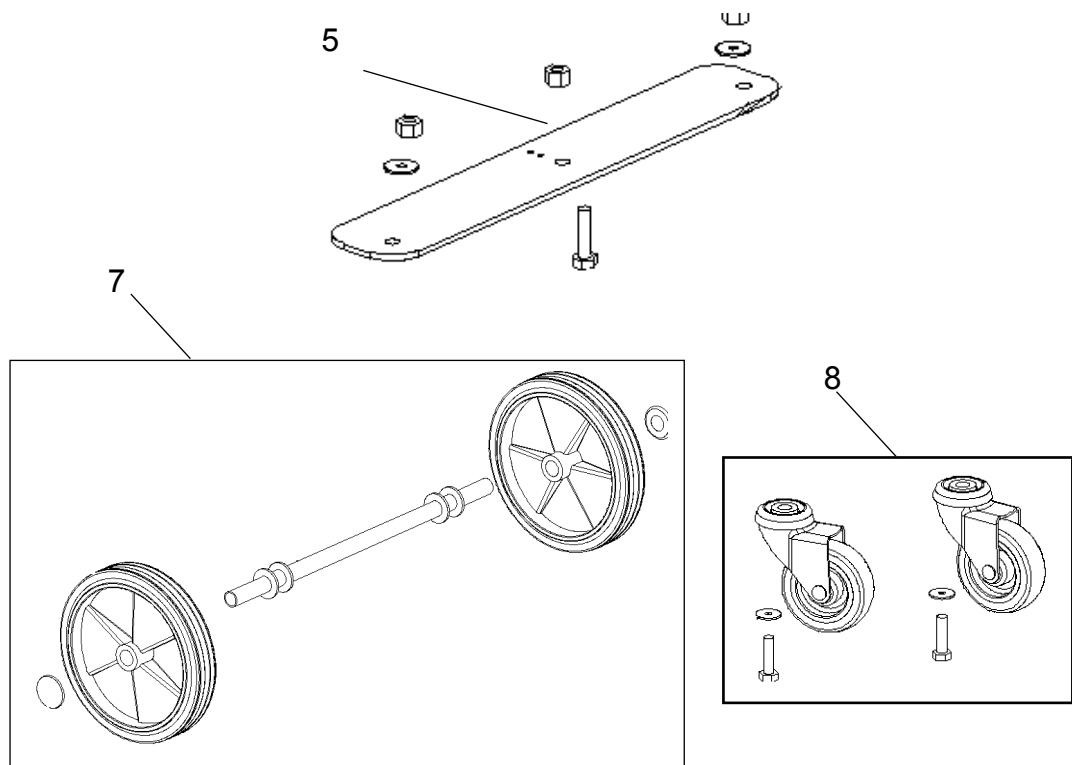


04-11**CONTAINER****823 0078 030****EWD 315, EWD 320****5**

Item.No.	Part No.	Qty.	Description	Note
1	147 0712 500	1	Handle cpl.	Screws included
2	140 8691 500	2	Latches	Screws included
3	140 7604 510	1	Hose	
5	140 7204 500	1	Inlet	Screws and trigger included
6	140 9554 500	1	Container 12 Gallon	Complete container with wheels
6	147 0713 500	1	Container 16 Gallon	Complete container with wheels

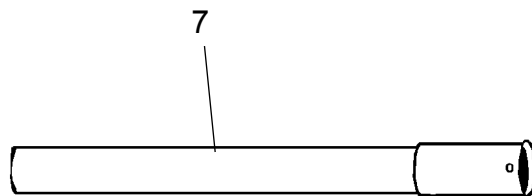
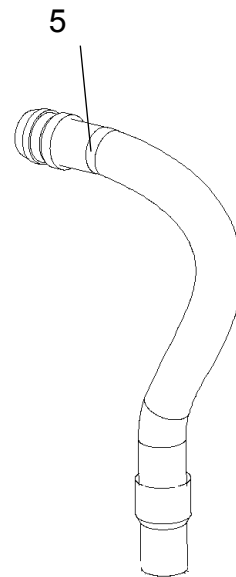
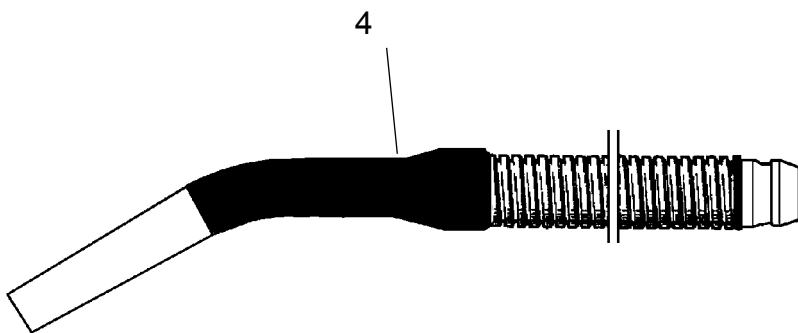
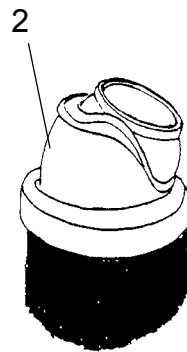
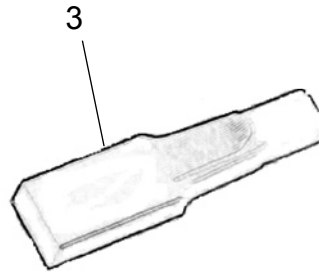
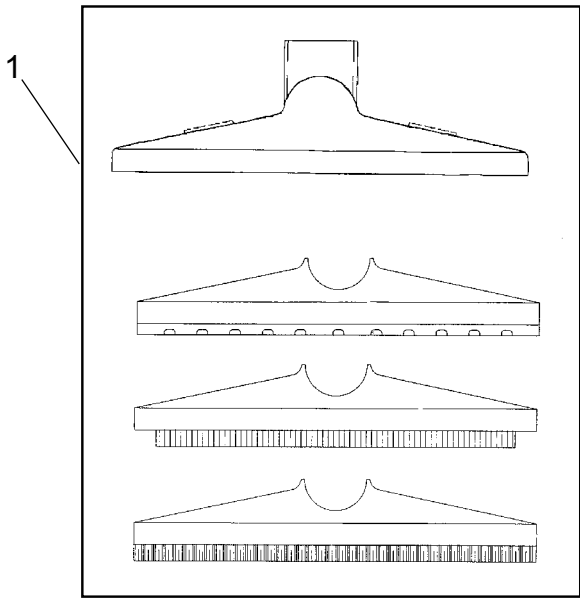
6

EWD 315, EWD 320



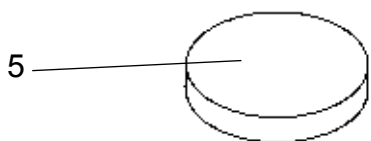
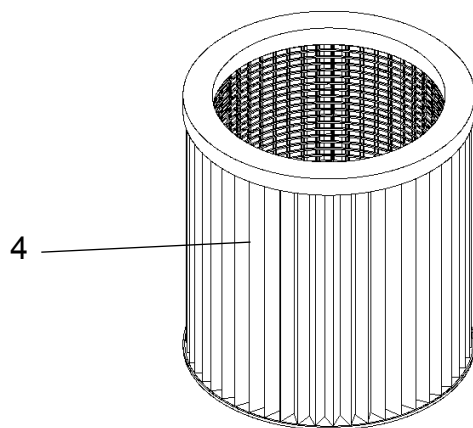
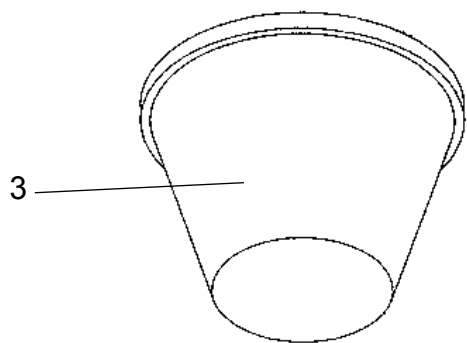
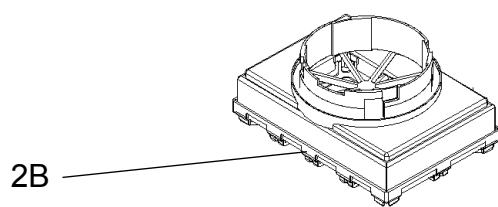
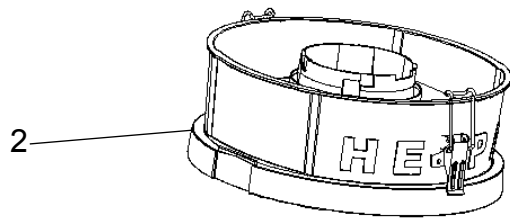
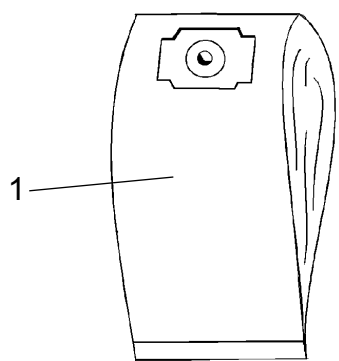
04-11**WHEELS****823 0078 030****EWD 315, EWD 320****7**

Item.No.	Part No.	Qty.	Description	Note
5	140 9553 500	1	Bracket plate for castor wheels	Screws and nuts included
7	140 9543 500	2	Wheel Ø 8.0 in (200 mm)	Shaft included
8	140 5476 520	2	Castor wheels	Screws and washers included

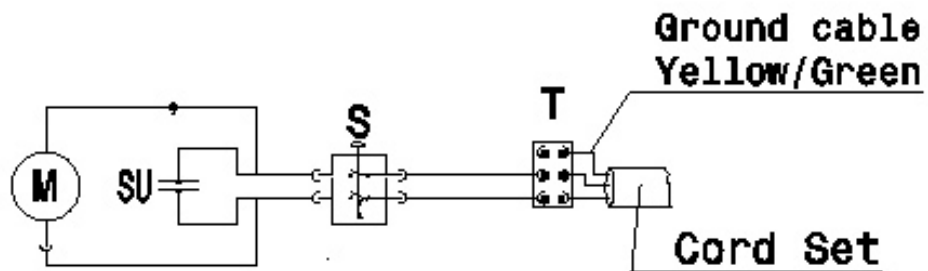


05-01**NOZZLES AND HOSES****823 0078 030****04-11****EWD 315, EWD 320****9**

Item.No.	Part No.	Qty.	Description	Note
1	140 8248 040	1	Universal nozzle, Ø 1.50 in	Complete with rubber strips, brush strips and carpet insert
2	010 7031 000	1	Brush nozzle Ø 1.50 in	Optional
3	140 8258 000	1	Crevice nozzle Ø 1.50 in	Optional
4	140 4001 010	1	Hose complete with handle	Mat.: Plastic hose Ø 1.50 in Snap in coupling
5	140 2148 500	1	Hose, Ø 1.50 in 1 1/2 ", 500mm	Hose for front nozzle
7	011 6451 010	1	Extension tube Aluminium	Ø 1.50 in L= 19.68 in (500 mm)



Item.No.	Part No.	Qty.	Description	Note
1	147 0746 010	3	Dust bags	3-pcs.
2	147 0766 500	1	HEPA-Protection Ring	For all models
2B	140 8678 500	1	Filter HEPA	For all models
3	140 8658 500	1	Main filter	For all models
4	140 8686 500	1	Filter Cartridge	For all models
5	140 8682 500	1	Filter motor	For all models



M Fan Unit

S Switch

SU Suppressor Unit

T Terminal Block