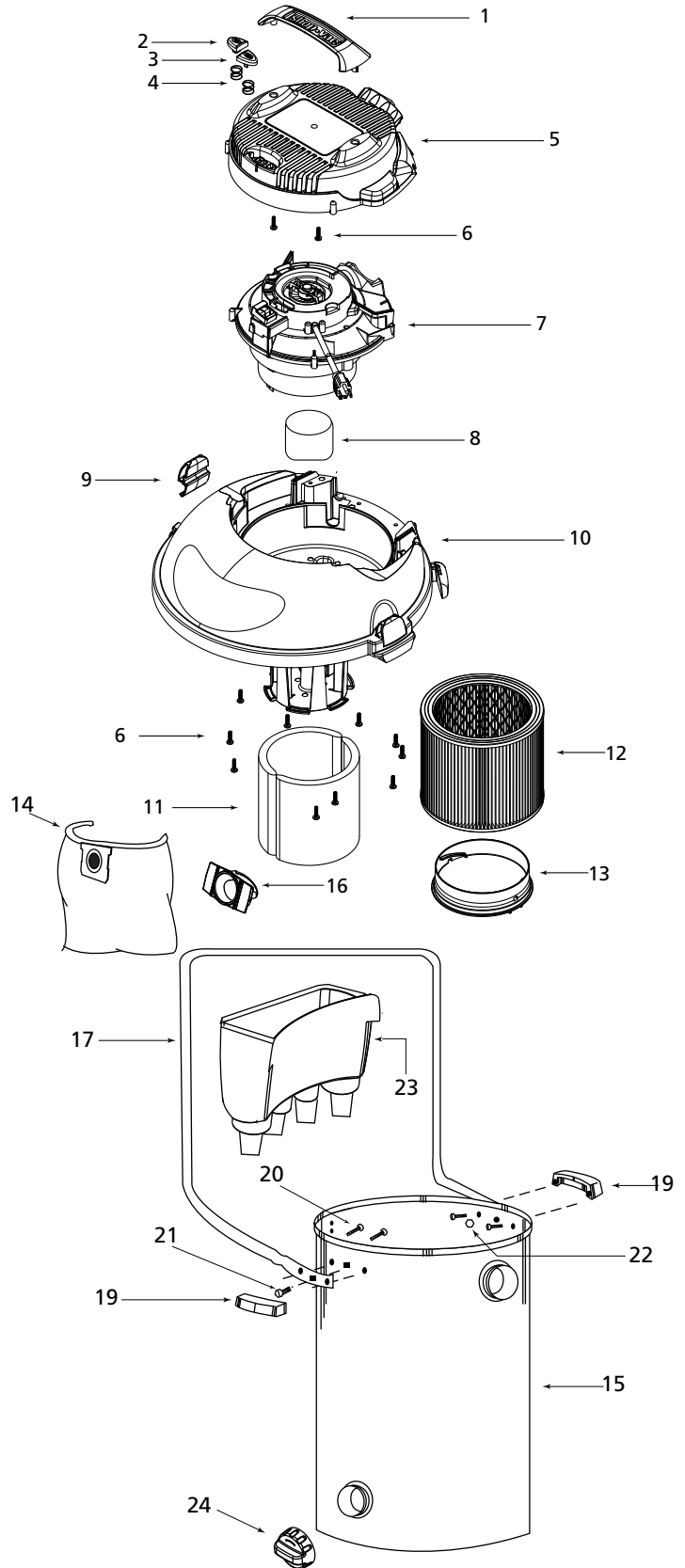


shop·vac[®]

Model - 90L650A

Catalog 9301311
(14 Gal.) S/S Lowes



ITEM	DESCRIPTION	PART NO.
1	Handle	3753000
2	Switch Button - Red	7441510
3	Switch Button - Green	7441500
4	Spring	2802899
5	Motor Cover Assembly (Includes Item 5)	3747011
6	Screw 10 x 3/4" Trilobe T25 Head	1516599
7	Power Unit Assembly	8130897
8	Float	3545000
9	Lid Latch	7441600
10	Lid Cage and Latch Assembly	1944108
11	Foam Sleeve	9058562
12	Cartridge Filter (Includes Item 13)	9030462
13	Filter Retainer	3008000
14	Collection Bag	9067262
15	Tank Assembly	5140097
16	Inlet Deflector	7413100
17	Carriage Handle	2088600
18	Handle and Hardware Package*	9355596
19	Side Tank Handle	9355100
20	#10 x 3/4" Screw Hex Head	1503999
21	Bolt 1/4"-20 x 1/2"	6401299
22	1/4"-20 Hex Nut	1300199
23	Accessory Basket	9065900
24	Drain Cover	7443420

*Includes 19-22

STANDARD ACCESSORIES

- 12' x 1-1/2" locking hose
- 2 -metal extension wands
- 14" metal nozzle
- 14" squeegee insert
- hose holder
- 14" brush insert

FIVE-YEAR HOME USE WARRANTY

Your Shop-Vac® vacuum cleaner is warranted in normal household use, in accordance with the User Manual, against original defects in material and workmanship for a period of five years from date of purchase. Should this product be used for commercial or rental use, a 90 day limited warranty will apply. Shop-Vac Corporation warrants placing this vacuum cleaner in correct operating condition, by repair or parts replacement, during the warranty period, without charge. This warranty does not cover accessories. Use of non-recommended filters and/or accessories may void the manufacturer's warranty.