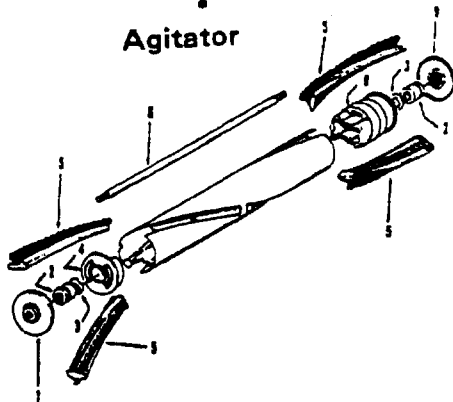
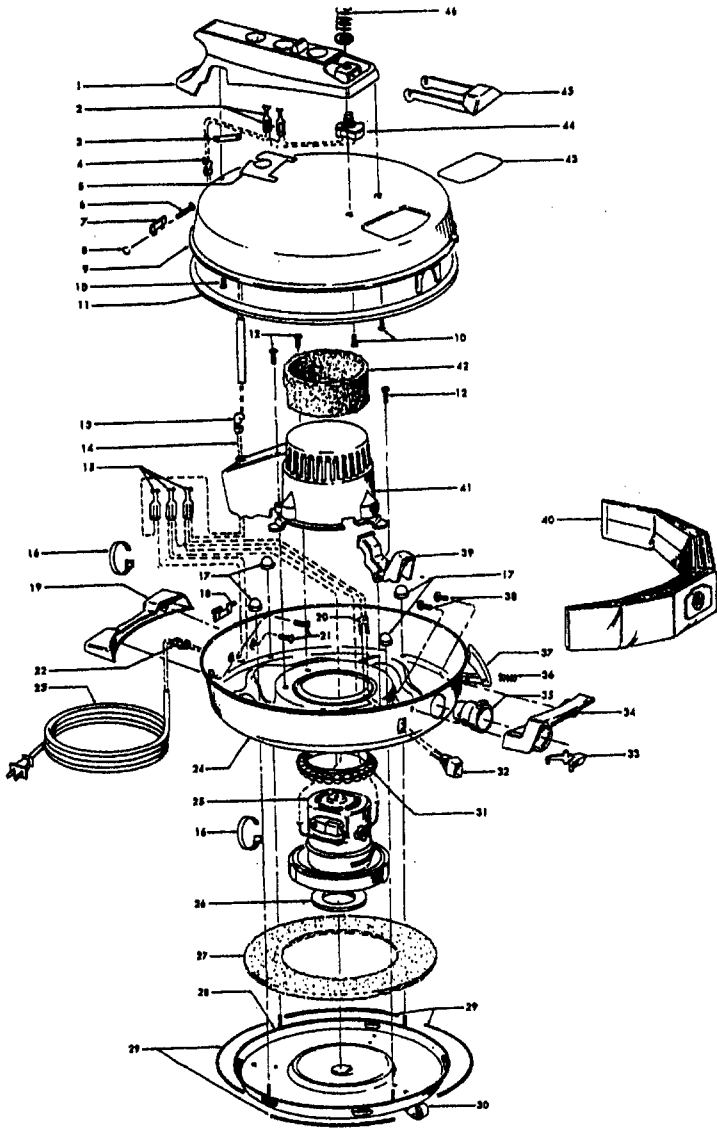


Agitator



| Ref. No. | Part No. | Description |
|----------|----------|-----------------|
| | 48416009 | Agitator |
| 1 | 41435018 | Thread Guard |
| 2 | 43267002 | Bearing |
| 3 | 21347003 | * Spring Washer |
| 4 | 36422001 | End |
| 5 | 48445017 | Agitator Brush |
| 6 | 160070 | Shaft |
| 8 | 38537002 | End Pulley |
| 9 | 41435021 | Thread Guard |

| Ref. No. | Part No. | Description |
|----------|------------------------------|---|
| | 48438189 A, C | Power Nozzle - LS - S3189, S3193, S3213 |
| | 48438057 D | Power Nozzle - MX - 4.5' Cord - S3245 |
| | 48438189 F | Power Nozzle - LZ - S3211, S3261, S3263, S3263-036, S3263-060, S3403, S3403-022 |
| | 48438190 G, J | Power Nozzle - LZ - S3209, S3419, S3425, S3425-022, S3425-032, S3425-060, S3403-022 |
| | 48438058 H + | Power Nozzle - LZ - 4.5' Cord |
| 1 | 46321005 | Attachment Cord 4.5'- AG |
| | 46321088 | Cord - AG - 3.5 |
| 2 | 42252059 A, C, D, E, F, G, H | Body - LS |
| | 42252174 I, J | Body - AAP |
| | 51375042 A, B, C + | Nameplate |
| | 52125095 F + | Nameplate |
| | 52125088 G | Nameplate |
| | 52125107 H + | Nameplate |
| | 52125113 I | Nameplate |
| | 52125096 J | Nameplate |
| 3 | 48416009 | Agitator |
| 2 | 163768 | Strain Relief |
| 5 | 34663003 | Bracket |
| 6 | 43482024 | Nozzle Connector - LZ |
| 7 | 12227 | Insulated Terminal (2 Wire) |
| 8 | 34112005 | * Seal |
| 9 | 34337003 | * Seal |
| 10 | 21447041 | * Screw |
| 11 | 32175025 | Wheel - AG |
| 12 | 31523005 | Wheel Shaft |
| 13 | 42246120 | Base Plate |
| 14 | 21447007 | * Screw |
| 15 | 34337004 | * Seal |
| 16 | 42256090 | + Duct Cover |
| 17 | 34123015 | * Duct Cover Seal |
| 18 | 35276001 | * Detent Spring |
| 19 | 43177073 | Motor |
| 20 | 35271001 | Bracket - LH |
| 21 | 38528011 | Belt |



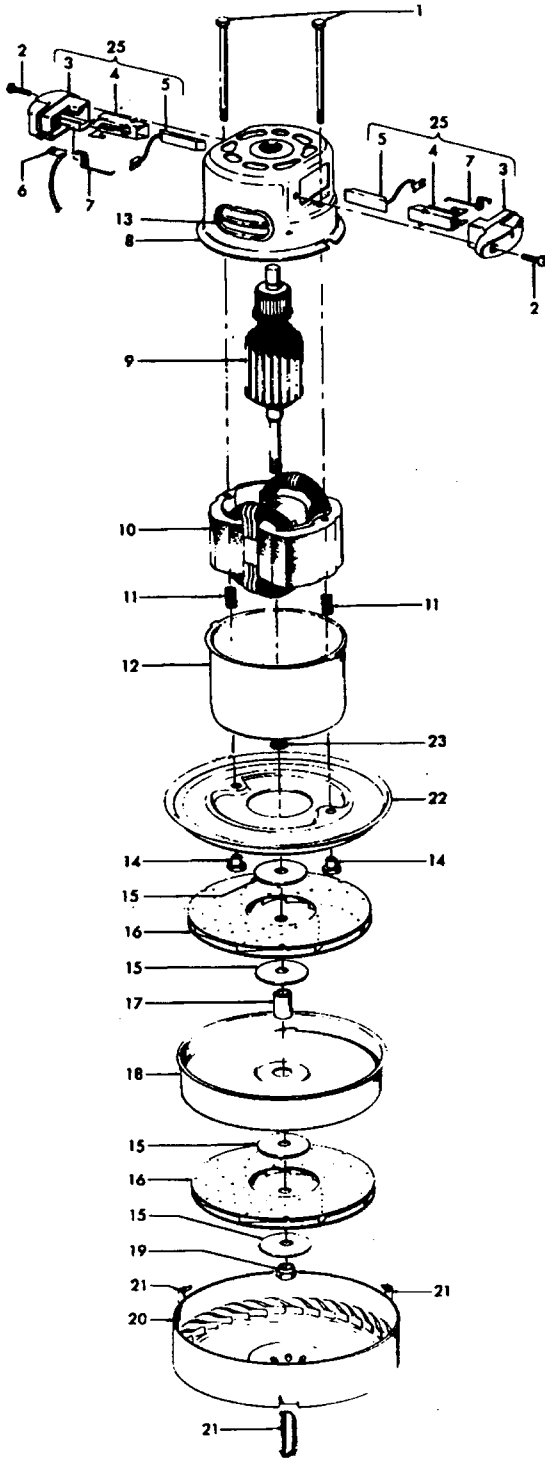
| Ref. No. | Part No. | Description |
|----------|----------|---------------------------|
| 1 | 36433003 | + Tool Rack - LB |
| 2 | 48969 | * Wire Nut |
| 3 | 21366003 | + Speed Nut |
| 4 | 27482124 | + Strain Relief |
| 5 | 34363002 | + Wire Shield |
| 6 | 47938 | * Hinge Pin |
| 7 | 35214004 | Hinge Leaf - Upper |
| 8 | 48123AV | +* Lock Ring |
| 9 | 42211203 | + Upper Shell - LB |
| 10 | 166735EF | + Screw |
| 11 | 170361JM | + Furniture Guard |
| 12 | 17001FW | * Screw |
| 13 | 27482227 | Strain Relief |
| 14 | 46311112 | + Pigtail Cord |
| 15 | 48969 | * Wire Nut |
| 16 | 27479307 | * Wire Tie |
| 17 | 21851003 | *+ Nut |
| 18 | 170348AV | + Hinge Leaf - Lower |
| 19 | 36921008 | + Rest Pad - JR |
| 20 | 34723001 | Retainer Clip |
| 21 | 21447014 | * Screw |
| 22 | 27482301 | Strain Relief |
| 23 | 46363224 | Attach. Cord - AAP - 20 |
| 24 | 42213351 | + Intermediate Shell - JR |
| 25 | 43577074 | + Motor - 3.4 - (P-60) |
| 26 | 31178015 | Compression Pad |
| 27 | 31178012 | Muffler |
| 28 | 41421326 | + Bottom Pan - JR |
| 29 | 34111002 | Gasket |
| 30 | 23737202 | Caster Wheel |
| 31 | 169293 | Resilient Mount - Upper |
| 32 | 46326096 | + Receptacle - JM |
| 33 | 36151012 | Latch |
| 34 | 39457006 | + Handle |
| 35 | 170352AG | Bag Collar Connector |
| 36 | 48512FW | + Spring |
| 37 | 16439JX | + Latch |
| 38 | 21447024 | + Screw |
| 39 | 37959020 | + Wire Cover - JM |
| 40 | 4010009H | Throw Away Bag - 3 Pk. |
| 41 | 37196070 | Motor Cover - JM |
| 42 | 38764006 | Filter |
| 43 | 52125064 | + Nameplate |
| 44 | 28212026 | Switch |
| 45 | 38456069 | + Switch Button - JR |
| 46 | 38314002 | Spring |
| | 56513134 | + Owner Manual |
| | 58185091 | + Carton |
| | 58343015 | + Bottom Support |
| | 58347002 | + Top Support |

Cleaning Tools - (P-92)

48438189 Power Nozzle

Celebrity Motor

Motor - 1 Speed - 43577074 (3.7) Motor - 2 Speed - 43577093 (3.7)



43577093 Motor Comp. - S3153, S3141
43577074 + Motor Comp. - S3059, S3059-030, S3061, S3061-030, S3077, S3139, S3139-035, S3173, S3217, S3219, S3233

| Ref. No. | Part No. | Description |
|----------|----------|-------------------------|
| 1 | 12022 | Field Bolt |
| 2 | 21429406 | * Screw |
| 3 | 168038 | Brush Carrier |
| 4 | 168506- | Brush Holder |
| 5 | 167679 | Carbon Brush |
| 6 | 27666551 | * Terminal |
| 7 | 38353004 | Spring |
| 8 | 169706 | Motor Housing - Upper |
| 9 | 44765106 | Armature |
| 10 | 45311018 | + Field - 2 Speed - 3.7 |
| | 45311022 | + Field - 1 Speed - 3.7 |
| 11 | 167721FW | Spring |
| 12 | 41823001 | Motor Housing - Lower |
| 13 | 169702BZ | + Bushing |
| 14 | 167695EF | Nut |
| 15 | 21312774 | + Washer |
| 16 | 43566006 | + Fan |
| 17 | 31732003 | Spacer |
| 18 | 169712 | + Interstage |
| 19 | 33426001 | Nut |
| 20 | 37218005 | Diffuser |
| 21 | 34786002 | Spring Clip |
| 22 | 169713FW | Mounting Plate |
| 23 | 31148002 | Spacer |
| 25 | 168506 | Brush Carrier Assm. |

| Ref. No. | Part No. | Description |
|----------|----------|--|
| 1 | 43433085 | Hose - AAP - Celebrity |
| 2 | 43433032 | + Hose - JM - Spirit - 5-1/2' |
| 3 | 43433067 | + Hose - AAP - Spirit - 5-1/2' |
| | 43433081 | + Hose - MV -S/C- Spirit - 5-1/2' |
| | 43433084 | Hose - AAP - S/C - Spirit - 7' |
| | 43433111 | Hose - 2W - AG -S/C - Spirit |
| 4 | 46321076 | Cord Repair Kit |
| 5 | 34777005 | Suction Reg. Control - AG |
| | 34777007 | Suction Reg. Control - MV |
| 6 | 36153009 | Latch Ring - AG |
| 7 | 43468055 | Hose Tube - BL - 14 |
| 8 | 43453086 | + Extension Tube - BL - 22 |
| | 43453035 | + Extension Tube - AX - 22 |
| | 43453052 | Extension Tube - 20 - AX (Gray Clip) |
| | 43453058 | + Extension Tube - BL - 20 (Gray Clip) |
| 9 | 3863801P | Extension Tube -Poly - AG |
| 10 | 43453027 | Extension Tube |
| 11 | 43414073 | Floor Brush - AG |
| 12 | 38614023 | + Furniture Nozzle - 1 Pc. - 17 |
| | 43414057 | Furniture Nozzle - AG |
| | 38614024 | Furniture Nozzle - AG |
| 13 | 43414064 | Dusting Brush - AG |
| 14 | 38617017 | Crevice Tool - AG |
| 15 | 43414015 | + Furniture Brush - JM |
| | 43414016 | Furniture Brush - AG |
| 16 | 38644040 | Swivel Connector - JM |
| | 38644020 | Swivel Connector - AG |
| 17 | 33712007 | Split Ring |
| 18 | 48447001 | + Brush Back |
| 19 | 12845JM | Gasket |
| 20 | 12783 | +* Rivet |
| 21 | 36171008 | Cord Clip - MV |
| | 36171005 | Cord Clip - AG |
| 22 | 13275 | +* Screw |
| 23 | 13142AG | Suction Control |
| 24 | 13257BZ | Support |

