

## REPAIR PARTS LIST

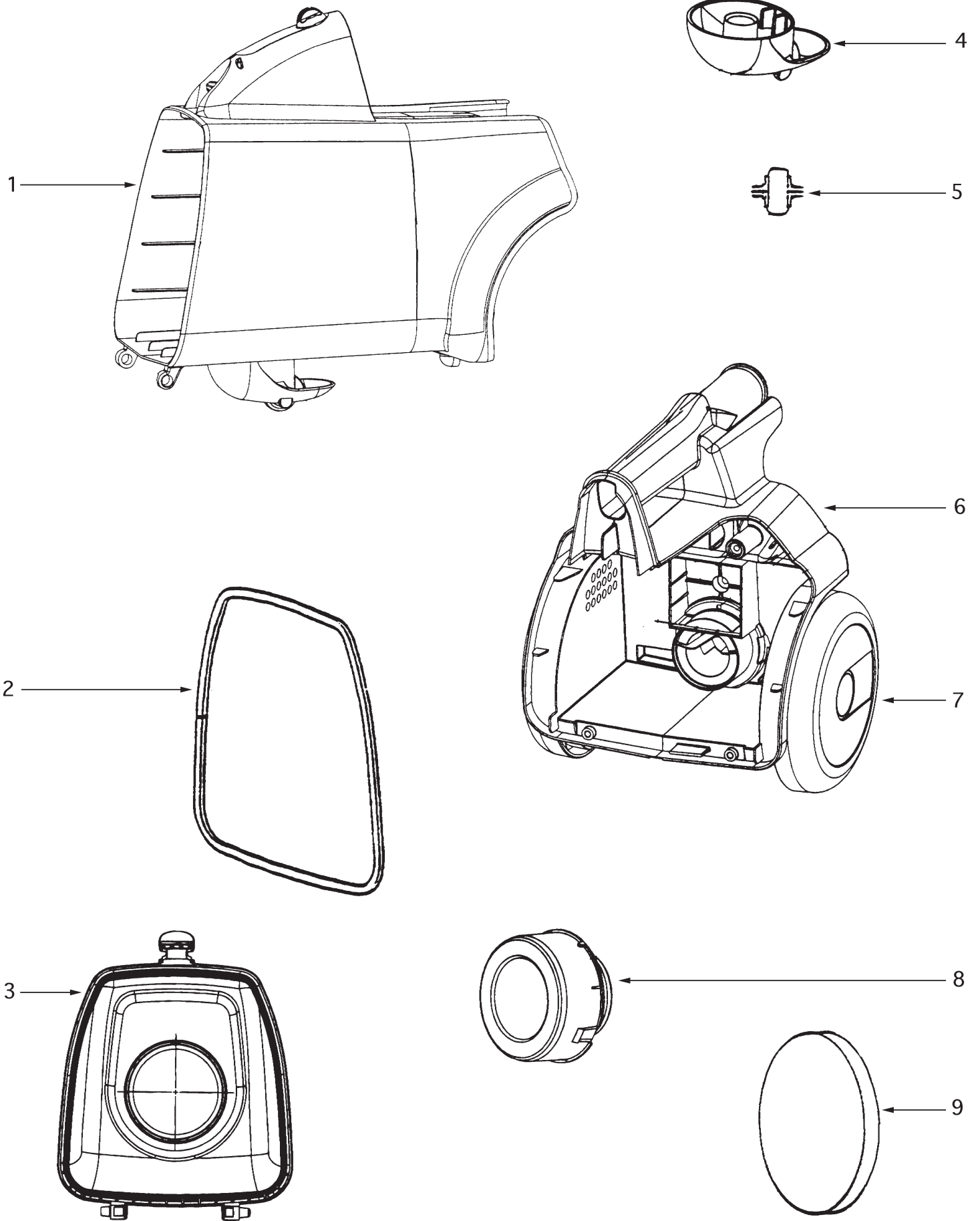
# SC3683A

Date: May 14, 2002

**THE EUREKA COMPANY**  
**BLOOMINGTON, ILLINOIS 61701**

**MODEL SC3683A**  
**SANITAIRE COMMERCIAL**  
**MIGHTY MITE**

**800-353-9991 [VacshopUSA.com](http://VacshopUSA.com) e-mail [sales@VacshopUSA.com](mailto:sales@VacshopUSA.com)**



## **SC3683A**

- |    |             |                           |
|----|-------------|---------------------------|
| 1. | 60487-27    | HOUSING ASSEMBLY*         |
| 2. | 59046-1     | FRONT COVER GASKET        |
| 3. | 38956-1SV   | FRONT COVER ASSEMBLY**    |
| 4. | 38805-1     | CASTER ASSEMBLY***        |
| 5. | 37409-1     | WHEEL & HUB ASSEMBLY      |
| 6. | 28008B-4    | REAR HOUSING ASSEMBLY**** |
| 7. | 15409A-119N | REAR WHEEL                |
| 8. | 27964-119N  | EXTENSION TUBE            |
| 9. | 38333       | FILTER                    |

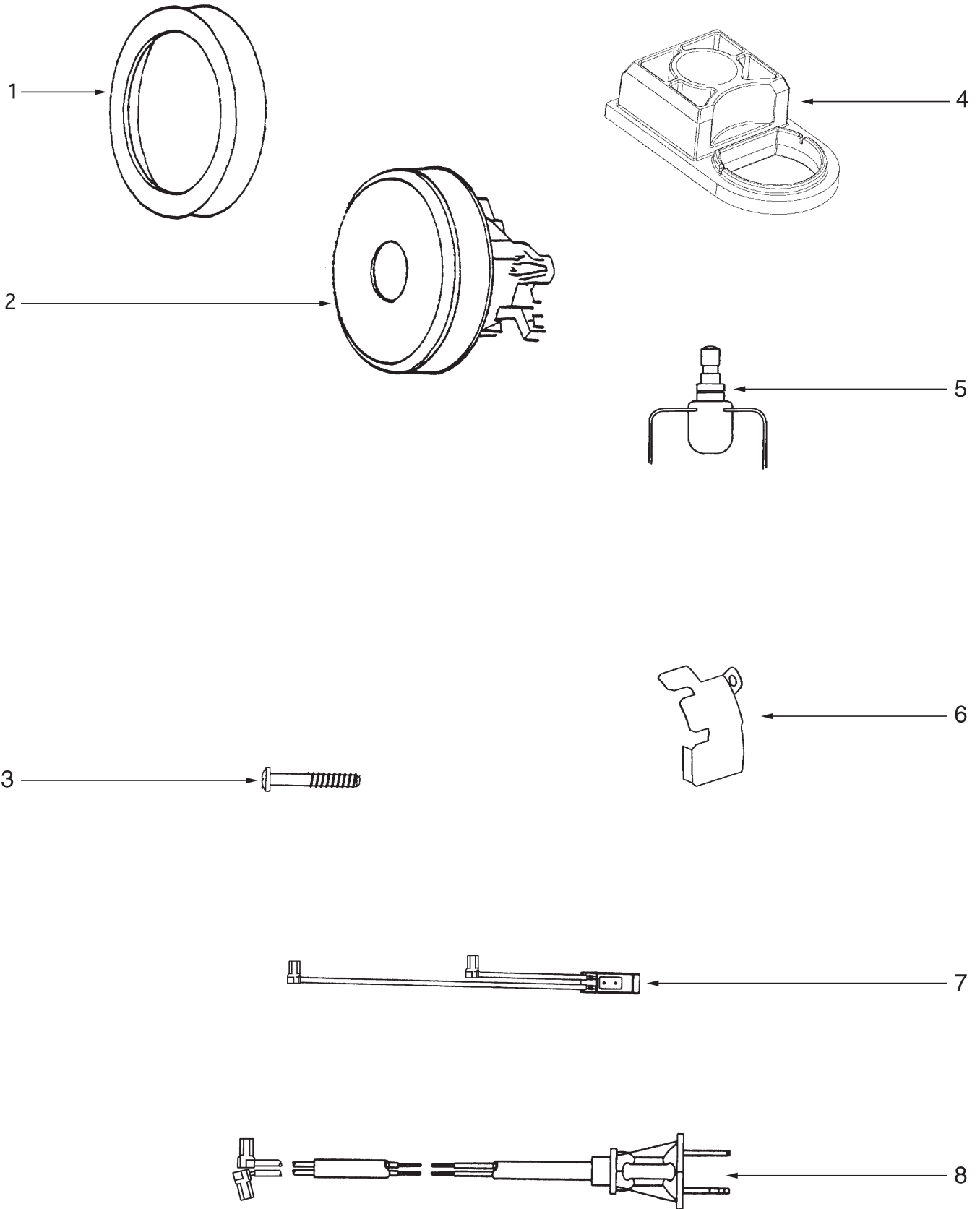
\* INCLUDES ITEMS 4 & 5

\*\* INCLUDES ITEMS 2 & 8

\*\*\* INCLUDES ITEM 5

\*\*\*\* INCLUDES ITEM 7

**800-353-9991 VacshopUSA.com e-mail sales@VacshopUSA.com**

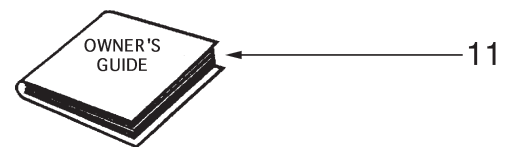
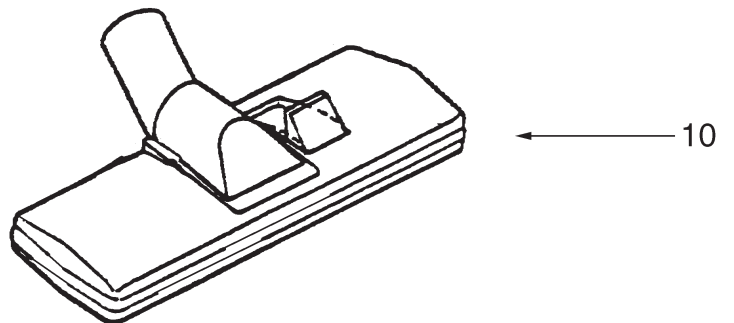
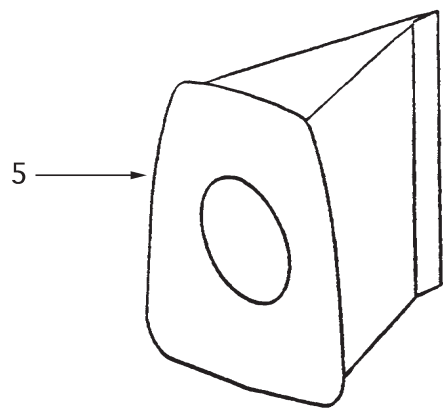
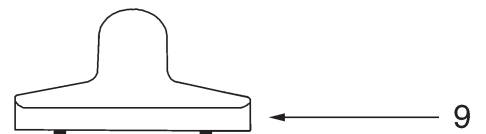
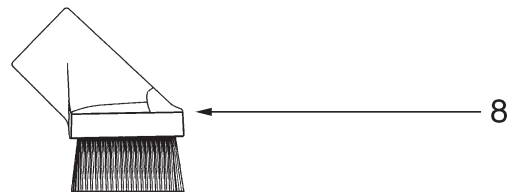
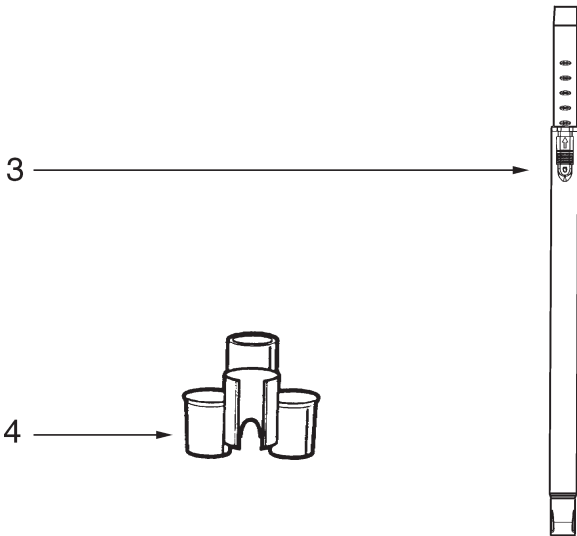
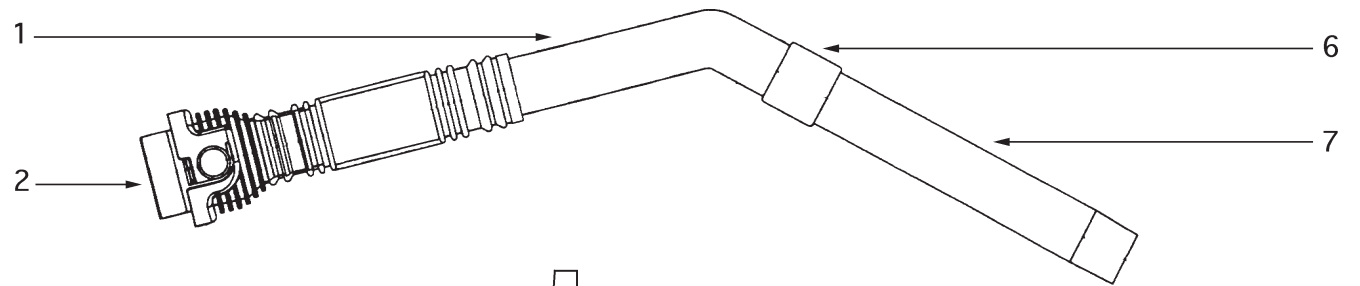


## **SC3683A**

- |    |          |                                |
|----|----------|--------------------------------|
| 1. | 28261    | MOTOR MOUNTING GASKET          |
| 2. | 60865-5  | MOTOR ASSEMBLY*                |
| 3. | 60610    | SCREW - pkg of 10              |
| 4. | 28050    | MOTOR BUSHING                  |
| 5. | 28304A-2 | SWITCH ASSEMBLY                |
| 6. | 39028    | WIRE SHIELD                    |
| 7. | 39408-2  | THERMOSTAT & TERMINAL ASSEMBLY |
| 8. | 39409-5  | CORD & TERMINAL ASSEMBLY       |

\* INCLUDES ITEM 7

**800-353-9991 VacshopUSA.com e-mail sales@VacshopUSA.com**



## **SC3683A**

- |     |            |                                      |
|-----|------------|--------------------------------------|
| 1.  | 60289-1    | HOSE ASSEMBLY COMPLETE*              |
| 2.  | 15355-119N | HOSE COUPLING                        |
| 3.  | 39514      | TELESCOPIC WAND                      |
| 4.  | 54610      | CLIP & TOOL                          |
| 5.  | 60295A     | DISPOSABLE BAG (STYLE MM) - pkg of 3 |
| 6.  | 37653-3    | BLEEDER                              |
| 7.  | 26193-3    | CURVED HANDLE ASSEMBLY               |
| 8.  | 60290-1    | DUSTING BRUSH                        |
| 9.  | 38284-3    | UPHOLSTERY NOZZLE                    |
| 10. | 38702-2    | FLOOR AND WALL BRUSH                 |
| 11. | 72095      | OWNER'S GUIDE                        |
| 12. | 27237-3    | CREVICE TOOL                         |

\* INCLUDES ITEMS 2, 6 & 7

**800-353-9991 VacshopUSA.com e-mail sales@VacshopUSA.com**

39402

